

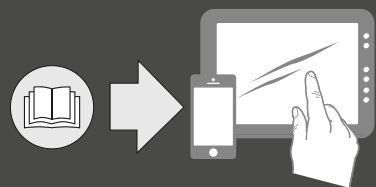


MEB 114 MEB 114-S

Quick Guide
Kurzanleitung
Guide de démarrage rapide
Guida rapida
Instrucciones resumidas
Instruções resumidas
Beknopte gebruiksaanwijzing
Krótka instrukcja obsługi
Snabbguide

Kort vejledning
Pikaohje
Γρήγορος οδηγός
Kısa Kılavuz
Краткая инструкция
快速指南
快速使用指南
クイックガイド
퀵 가이드

SENNHEISER



Sennheiser Documentation App



or online at
www.sennheiser.com/download
MEB 114_

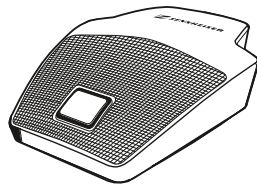
Sennheiser electronic GmbH & Co. KG

Am Labor 1, 30900 Wedemark, Germany
www.sennheiser.com

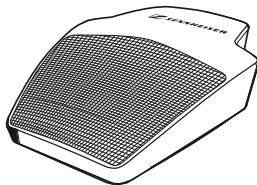
Printed in Germany, Publ. 07/19, 549117/A02

In the box

MEB 114-S

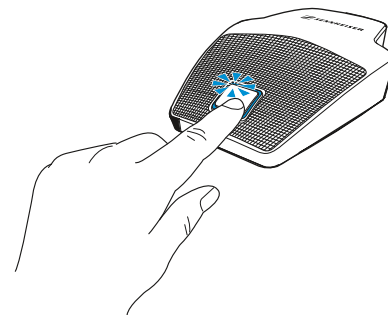


MEB 114



LED status

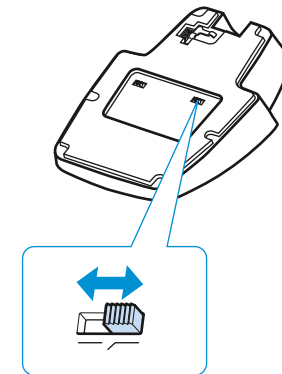
MEB 114-S



- lights up green: microphone active
- lights up red*: microphone muted

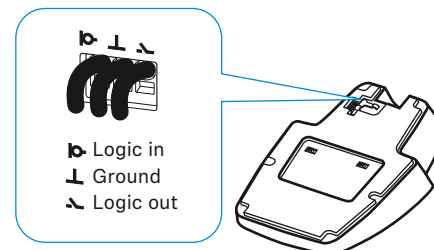
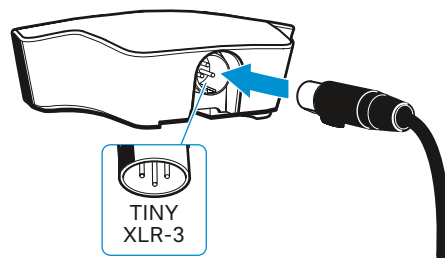
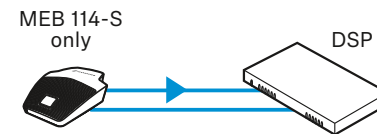
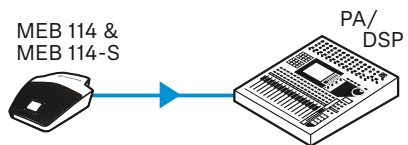
*This function is not supported by all PAs/DSPs.

Low-cut filter

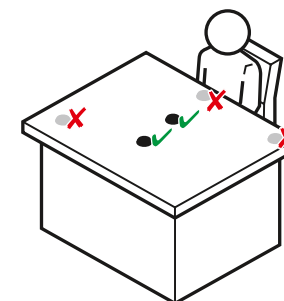
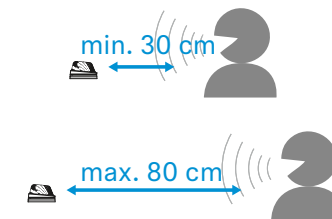


- low cut off
- low cut active (attenuation) cuts of frequencies < 120 Hz

Setup

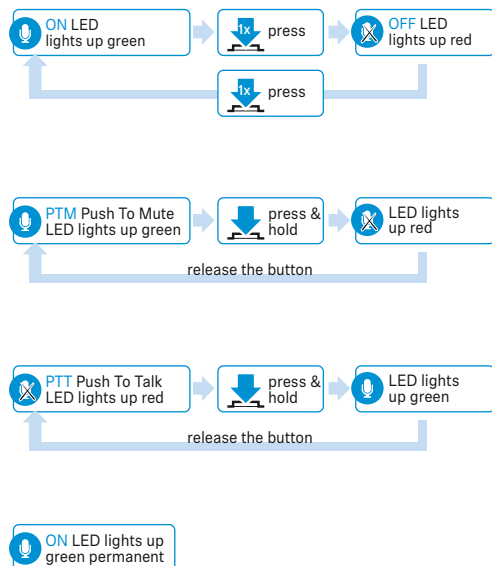
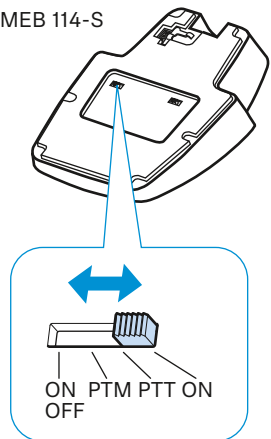


see Instruction manual of the microphone series**



Microphone behavior

MEB 114-S



Specifications

Microphones	MEB 114	MEB 114-S
Pick-up pattern	cardioid	
Frequency response	40 – 20,000 Hz	
Acoustic principle	pressure zone microphone	
Nominal impedance (at 1 kHz)	200 Ω	
Sensitivity	10 mV/Pa	
Max. SPL	140 dB at 1 kHz	
Equivalent noise level (weighted as per CCIR 468-3)	29 dB(A)	
Power supply	48 V phantom power	
Current consumption	1.5 mA	5.3 mA (microphone/ signal light ring: 2.65 mA each)
Connector	tiny XLR-3	
Temperature	operation: -10 °C – +50 °C storage: -25 °C – +70 °C	
Dimensions	85 x 25 x 100 mm	
Weight	approx. 291 g	